



Westborough Mews

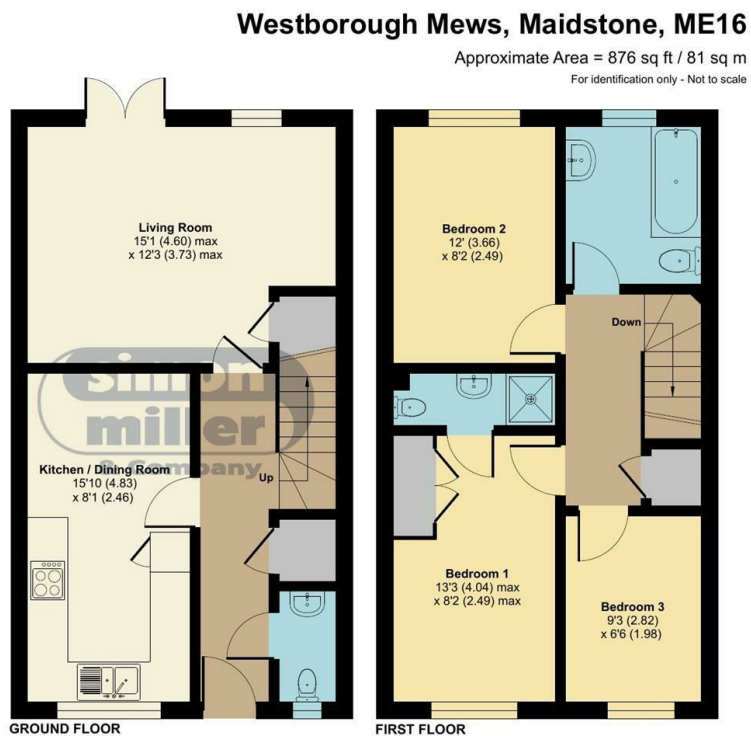
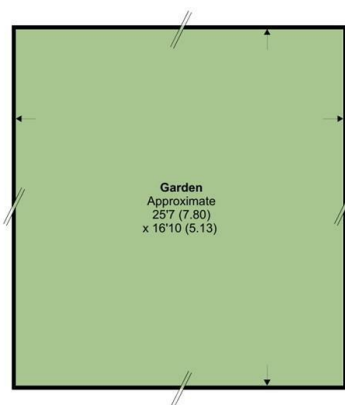
, Barming ME16 8TU

- Chain Free
- Allocated Parking
- Ensuite Bathroom & Downstairs WC
- Large Bathroom
- Quiet Cul De Sac Location
- Well Presented
- Modern Fitted Kitchen
- Low Maintenance Rear Garden

Asking Price £299,995 Freehold



Local Authority Maidstone
Borough Council
Council Tax Band D
EPC Rating C



Floor plan produced in accordance with RICS Property Measurement Standards incorporating International Property Measurement Standards (IPMS2 Residential). © nichecom 2022. Produced for Simon Miller & Company. REF: 916606

Maidstone & The Weald Office

11 Colman House, Colman Parade, King
Street, Maidstone, Kent, ME14 1DN

Contact

01622 691255
maidstonesales@simonmiller.co.uk

Agents Note: Whilst every care has been taken to prepare these particulars, they are for guidance purposes only. All measurements are approximate and for general guidance purposes only and whilst every care has been taken to ensure accuracy, they should not be relied upon and potential buyers/tenants are advised to recheck the measurements.

